



JESUS COLLEGE CHAPEL

EASTER TERM 2022



Judith and Holofernes
James Hall[†]

REGULAR SERVICES (24th April – 17th June)

Monday–Friday 8.30am Morning Prayer (said)

Tuesday 6.30pm

EVENTS FOR COLLEGE MEMBERS

Iftar Buffet (Wednesday 27th April, 8.15pm, Bawden and Bain Rooms)

All are most welcome, of any faith or none, to come together for the breaking of the daily Ramadan fast and

CHAPEL CHARITIES

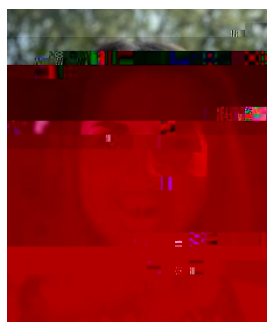
This term, collections (cash and card) will be taken at Sunday Choral Evensongs to support the work of Abbey People, The Children's Society, Red Hen and Lyn's House. Abbey People are a community charity supporting residents in one of the most deprived parts of Cambridge. The Children's Society provide specialist support to empower young people facing serious life challenges and mental health issues. Red Hen works with local primary schools and their families to overcome barriers to learning, as well as outreach workshops, events and activities. Lyn's House is a Cambridge-based community which provides a space for life-enhancing friendship amongst people with and without learning disabilities.

THE CHAPEL

Jesus College Chapel has for nine centuries been a place of quiet and contemplation, and it is open to all members of the College community. The clergy are available to all members of the College—of any faith or none—as pastoral advisers; they can also offer information about other faith groups. Contact the Dean of Chapel if you are willing to read lessons, lead intercessions, or help in other ways with services in Chapel. Enquiries regarding the use of the Chapel may be directed to the Secretary to the Dean, at chapel@jesus.cam.ac.uk.



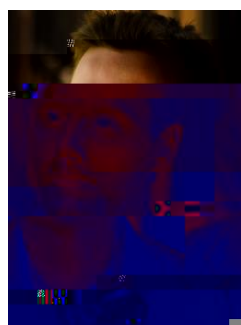
James Crockford
Dean of Chapel
Rooms: D1
(3)39433
j.crockford@jesus.cam.ac.uk



Eleanor Lancelot
Assistant Chaplain
(Dean's Clerk)
e.lancelot@jesus.cam.ac.uk

THE CHOIRS

Jesus College has a long and rich tradition of church music, and is distinctive in maintaining two choirs. The College Choir, consisting mostly of students, has a female soprano line whereas the Chapel Choir admits boy trebles from around the city of Cambridge. The lower voices are common to both choirs. Enquiries regarding the choirs may be directed to the Choir and Chapel Office Coordinator, at choir@jesus.cam.ac.uk. Alternatively you may wish to visit jesuscollegechoir.com.



Richard Pinel
Director of Music
r.pinel@jesus.cam.ac.uk



[/jesuscollegechapel](https://www.facebook.com/jesuscollegechapel)
[/jesuschoircambridge](https://www.facebook.com/jesuschoircambridge)



[@jescollchoir](https://twitter.com/jescollchoir)



[@jesus.chapel](https://www.instagram.com/jesus.chapel)
[@jesuscollegechoir](https://www.instagram.com/jesuscollegechoir)